

MEASUREMENT AND SIZES

WOMEN Body Size, Sweden/EU

Letter size

UK size	6	8	10	12	14	16	18	20
Chest measurement (1)	80	84	88	92	96	100	104	108
Waist (2)	64	68	72	76	80	84	88	92
Seat (3)	88	92	96	100	104	108	112	116
Inside leg for raw length (4)	89	90	91	92	93	94	95	96
Inside leg for hemmed trousers (4)	80	81	82	83	84	85	86	87
Head measurement in cm (5)	S (56)		M (58)		L (60)		XL (62)	XXL (64)

34	36	38	40	42	44	46	48	
XS		S		M		L		XL
6	8	10	12	14	16	18	20	
80	84	88	92	96	100	104	108	
64	68	72	76	80	84	88	92	
88	92	96	100	104	108	112	116	
89	90	91	92	93	94	95	96	
80	81	82	83	84	85	86	87	
S (56)		M (58)		L (60)		XL (62)	XXL (64)	

MEN Body Size, Sweden/EU

Letter size

UK size	32	34	36	38	40	42	44	46	48	50
Chest measurement (1)	84	88	92	96	100	104	108	112	116	120
Waist (2)	72	76	80	84	88	92	96	100	104	108
Seat (3)	92	96	100	104	108	112	116	120	124	128
Inside leg for raw length (4)	94	95	96	97	98	99	100	101	102	103
Inside leg for hemmed trousers (4)	83	84	85	86	87	88	89	90	91	92
Head measurement in cm (5)	XS (54)	S (56)		M (58)		L (60)		XL (62)		XXL (64)

42	44	46	48	50	52	54	56	58	60
XS	S		M	L		XL	XXL		XXXL
32	34	36	38	40	42	44	46	48	50
84	88	92	96	100	104	108	112	116	120
72	76	80	84	88	92	96	100	104	108
92	96	100	104	108	112	116	120	124	128
94	95	96	97	98	99	100	101	102	103
83	84	85	86	87	88	89	90	91	92
XS (54)	S (56)		M (58)		L (60)		XL (62)		XXL (64)

MEN, D-Size

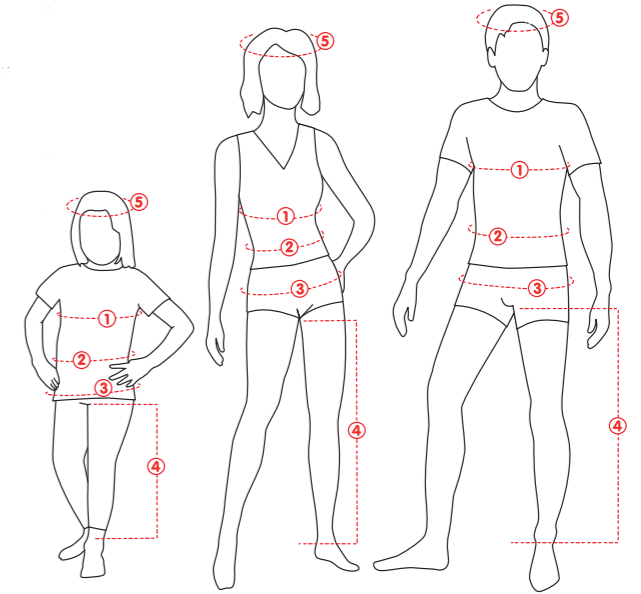
German sizes	23	24	25	26	27	28	29	30	31
Waist (2)	86	90	94	98	102	106	110	114	118
Inside leg for raw length (4)	92	93	94	95	96	97	98	99	100
Inside leg for hemmed trousers (4)	81	82	83	84	85	86	87	88	89

D92	D96	D100	D104	D108	D112	D116	D120	D124
23	24	25	26	27	28	29	30	31
86	90	94	98	102	106	110	114	118
92	93	94	95	96	97	98	99	100
81	82	83	84	85	86	87	88	89

KIDS Body Size/Length (cm)

Approximate age	3-4	4-5	5-6	6-7	7-8	8-9	9-10	10-11	11-12
Chest measurement (1)	54	56	58	61	64	67	70	73	76
Waist (2)	53	54	55	57	59	61	63	65	67
Seat (3)	59	61	63	66	69	72	75	78	81
Inseam (4)	43	47	51	55	59	63	67	71	75
Head measurement in cm (5)	54								

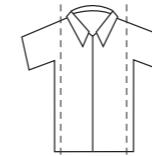
104	110	116	122	128	134	140	146	152
3-4	4-5	5-6	6-7	7-8	8-9	9-10	10-11	11-12
54	56	58	61	64	67	70	73	76
53	54	55	57	59	61	63	65	67
59	61	63	66	69	72	75	78	81
43	47	51	55	59	63	67	71	75
54								



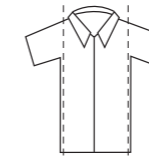
Shirt fits



Comfort fit
Has a fit that prioritises comfort.

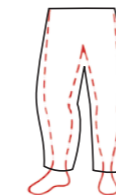


Regular fit
Has a traditional fit.

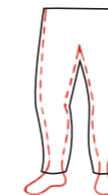


Slim fit
Fits snugly against the body.

Trouser fits



Comfort fit



Classic fit



High waist



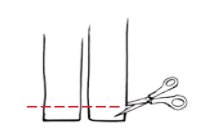
Mid waist



Low waist



Fixed length



Raw length

